



A NIGHT OUT



|| **Left:** *Trelise Cooper* Cut The Crepe dress \$649. || **This Page:** Matt wears *Crane Brothers* Calando Tuxedo \$2695, *Duchess* Silk Self-Tie bow tie \$89, *Rembrant* Black Leather Whole-Cut shoes \$399. Mikayla wears *Miss Crabb* Bianca Romper Double silk crepe P.O.A, *Modes* Bronze Art Deco Earrings \$198, *Stuart Weitzman* 'Song' sandal exclusive to *Scarpa* \$590. ||

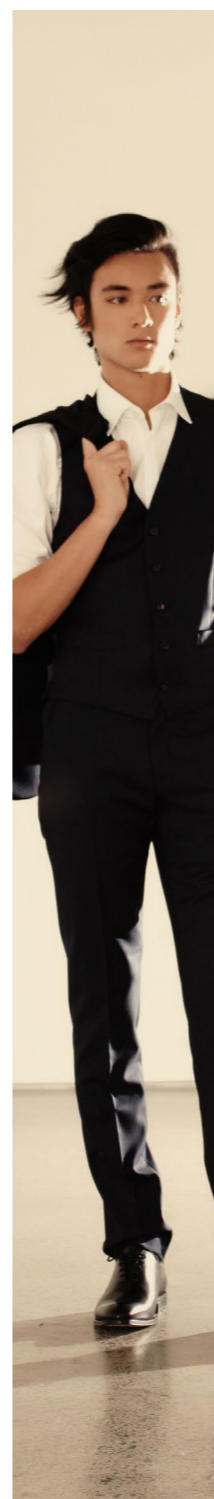


|| **Top:** Kookai Karlie Blazer Dress \$220, Modes Crystal Clip Earrings \$198 || **Right:** Rembrandt Bryan 'SV' Jacket \$599, Rembrandt Avalon Shirt \$169, Rembrandt Bow Tie. || **Opposite Page:** Mikayla wears Modes Pronovias dress P.O.A, Modes Crystal Clip Earrings \$198, Stuart Weitzman 'Song' Sandal exclusive to Scarpa \$590. Matt wears MJ Bale Saunders Jacket \$769, MJ Bale Saunders Trousers \$299, MJ Bale Jamie Blue Hankie \$59.95, Rembrandt Black Leather Whole-Cut shoes \$399. ||





|| **Top:** Matt wears *Working Style* Black Grosgrain Dinner Suit \$1490, *Working Style* Marcella Dinner Shirt \$249, *Working Style* Houndstooth Knitted Silk Tie \$149, *Working Style* White Silk Pocket Square \$99. Mikayla wears *Kookai* Florence dress \$240. || **Opposite Page:** Mikayla wears *Pearl Culture* Angie skirt 100% Silk \$550, *Pearl Culture* Monroe Cashmere silk sweater \$380, *Stuart Weitzman* 'Song' Sandal exclusive to *Scarpa* \$590. Matt wears *Rembrandt* Bryan 'SV' Jacket \$599, *Rembrandt* Avalon Shirt \$169, *Rembrandt* Ferry Formal Trousers \$279, *Rembrandt* Black Leather Whole-Cut shoes \$399. ||



|| Top: Matt wears *MJ Bale Saunders Jacket* \$769, *MJ Bale Saunders trouser* \$299, *MJ Bale Saunders waistcoat* \$219, *MJ Bale Owens White Shirt* \$89.95, *Rembrandt Black Leather Whole-Cut shoe* \$399. Mikayla wears *Contemporary Tailors Three piece white suit* designed by *Serena Kelsey* contemporarytailors.co.nz, *Stuart Weitzman 'Song'* sandal exclusive to *Scarpa* \$590. || Opposite Page: Matt wears *Crane Brothers Calando Tuxedo* \$2695, *Rembrandt Black Leather Whole-Cut shoe* \$399. Mikayla wears *Modes Zeila dress* \$898, *Modes Bronze Pearl & Crystal Art Deco Earrings* \$169. ||

PHOTOGRAPHER | Neil Gussey
MAKE-UP | Imeleta Kelett
MODELS | Mikayla Honey & Matt Bodger (Clyne)
LOCATION | Bowerbank Ninow, bowerbankninow.com
STYLIST | Verve Magazine